

# ROMUS<sup>®</sup>

## MULTI-FLOORING CUTTER "MH - 330"

Réf. 93995

### OPERATION MANUAL



[www.romus.fr](http://www.romus.fr)

**A PRODUCT OF**

**D-CUT**



**WARNING: FAILURE TO FOLLOW THESE RULES MAY RESULT IN SERIOUS INJURY! USING THIS MACHINE WITH RESPECT AND CAUTION WILL CONSIDERABLY LESSEN THE POSSIBILITY OF PERSONAL INJURY.**

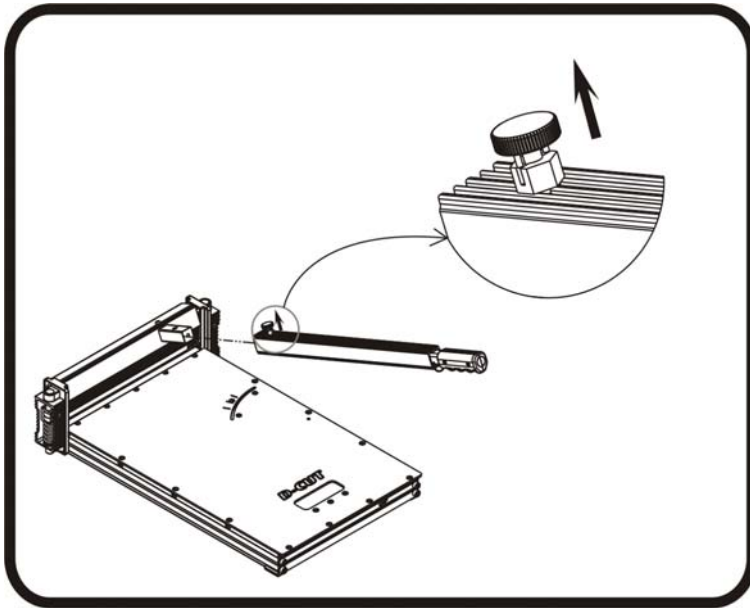
---

## **SAFETY RULES FOR THE MULTI-FLOORING CUTTER**

- 1. READ AND UNDERSTAND THIS INSTRUCTION MANUAL BEFORE OPERATING THE D-Cut MULTI-FLOORING CUTTERS.**
2. If you are not thoroughly familiar with the operation of D-Cut Multi-flooring Cutter, obtain advice from a qualified instructor or call 800-982-3434 USA
3. Stay alert. Do not operate while under the influence of drugs, alcohol, or medication.
4. Always wear safety approved eye protection with side shields(ANSI Z87.1)
5. Keep work area and free of debris.
6. Keep children and unauthorized persons away from the D-Cut Multi-flooring Cutter and work area.
7. Make sure tool is secure. Operate only on a firm substrate or solid stand.
8. Use the right tool. Do not force the D-Cut Multi-flooring Cutter or use it for a job for which it was not designed; use only on approved materials.
9. Keep Blade sharp. A dull Blade will not perform properly.
10. Always keep hands away from Blade while operating or carrying.
11. Do not alter or misuse this tool. The D-Cut Multi-flooring Cutter is precision built; modifications not specified in this manual may result in a dangerous condition.
12. Maintain the D-Cut Multi-flooring Cutter with care. Keep Blade sharp and clean. Follow instructions for lubricating and changing accessories.
13. Use only recommended accessories. The use of improper accessories may cause hazards or injury.
14. Never leave the D-Cut Multi-flooring Cutter unattended. Secure the handle with the Lock chain when not in use.

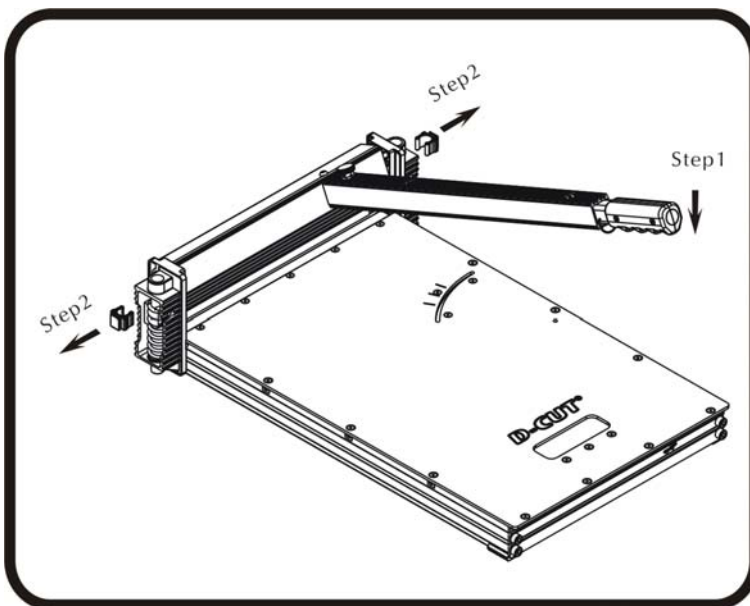


## SET UP



**Installation of the cutter (1)**  
Pull up the lock pin on the aluminum handle as show and insert the handle base into the handle as show.

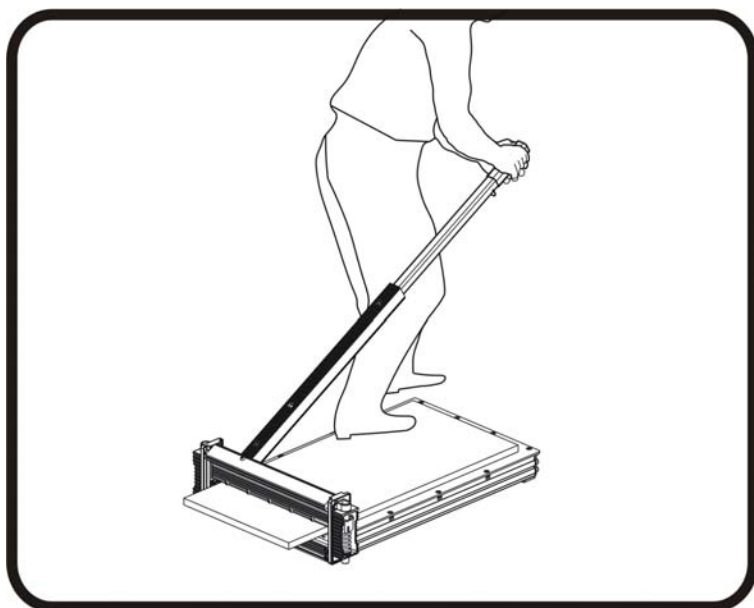
**Warning:** Do not put your fingers against the sharp edge of the blade at any time.



**Installation of the Cutter (2)**  
Press the handle down and then pull out the lock pieces from the side frames as shown.

**Warning:** Do not put your fingers against the sharp edge of the blade at any time.

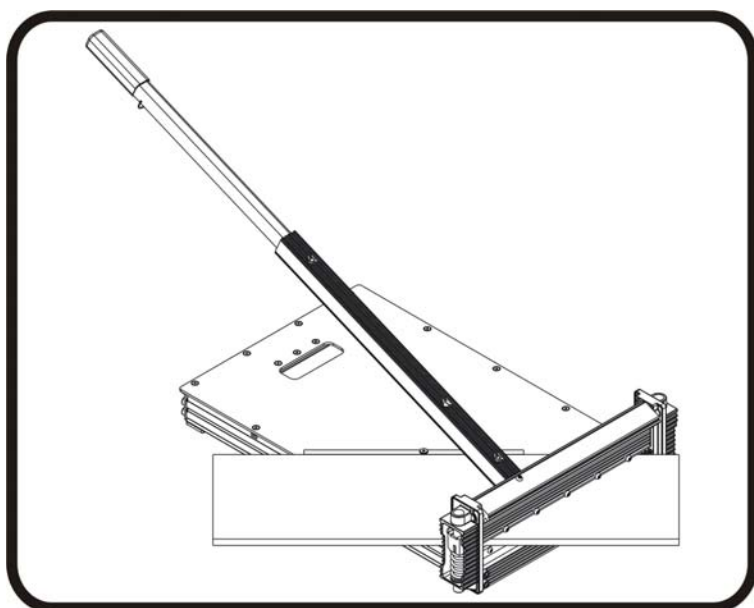
# CUTTING



## Straight Cutting

Insert material between the cutting blade and the base, flush with the angle attachment as shown and hold the material with foot then push handle down to complete a cut..

**Warning:** Maintain control of the handle. Do not allow handle to slam back after making a cut.



## 45° Cutting

Swing the angle attachment to 45°. Insert material between the cutting blade and the base, against the angle attachment as shown, then push the handle down to complete a cut.

**Warning:** Maintain control of the handle. Do not allow handle to slam back after making a cut.

**Warning:** Do not put your fingers against the sharp edge of the blade at any time.



# MAINTENANCE

## Blade Sharpening

Use provided sharpening stone to sharpen the blade edge several times until you don't feel the blade is sharp enough. Such sharpening does not hurt the blade's sharpness or its life. In the sharpening process, the blade does not need to be taken off from the blade holder.

**Warning:** Do not put your fingers against the sharp edge of the blade at any time.

## Changing the Blade

Use the provided Allan wrench to remove the five screws, then hold the blade by each end and carefully move the blade out of blade holder.

**Note:** the flat side of the blade facing the table.

**Warning:** Do not put your fingers against the sharp edge of the blade at any time.

## Carry

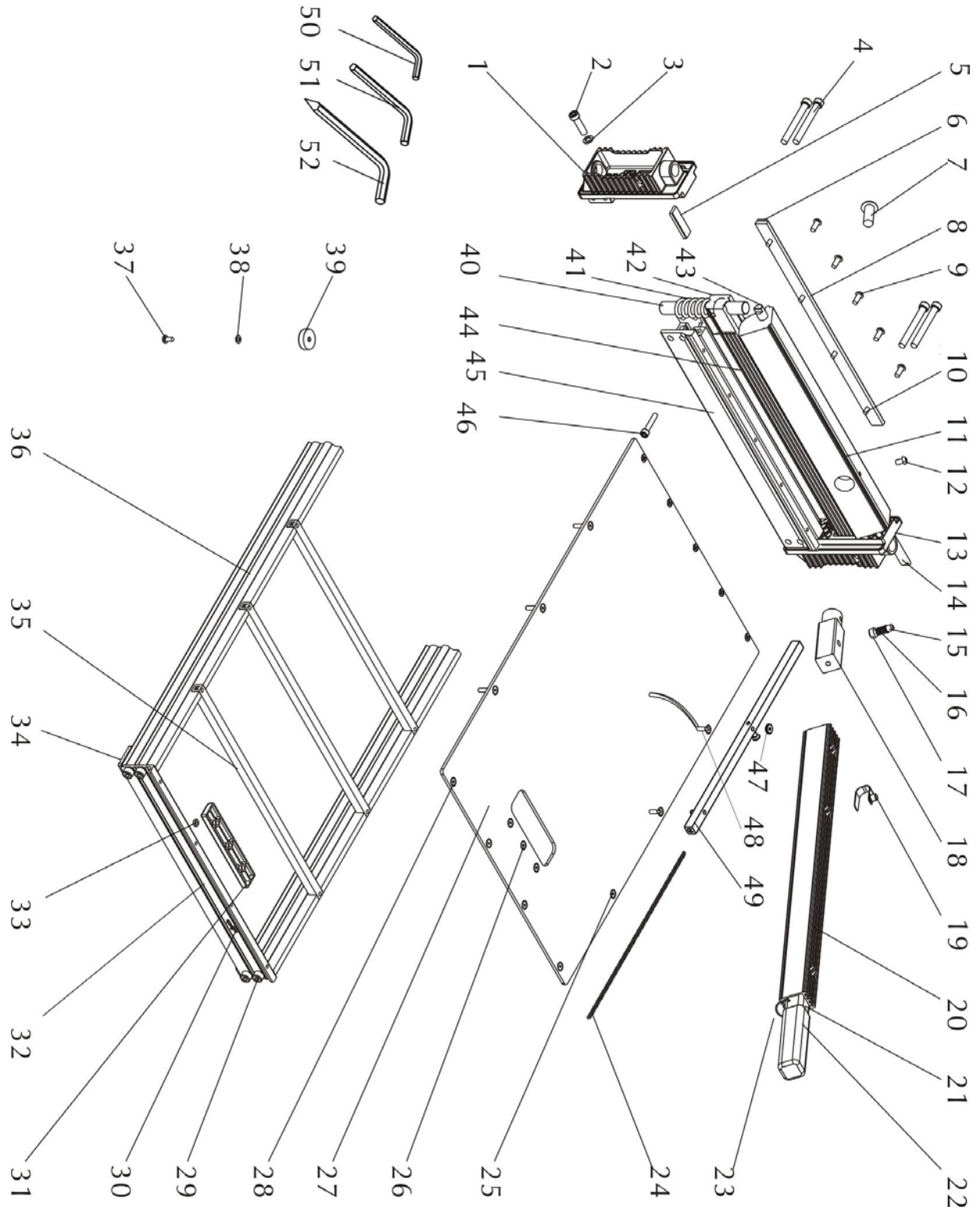
Hook the chain to the ring on the handle and carry the cutter as shown.



# PART LIST



**!WARNING**  
**VERY SHARP BLADE**





# PART LIST

	Parts	Q'ty		Parts	Q'ty
1	Side Frame A	1	27	Working Table	1
2	Bolt M8	2	28	Cross Bolt M5x8	9
3	Lock Washer	2	29	Bolt M8x8	4
4	Bolt M8x66	4	30	Hook B	1
5	Nylon Board	2	31	Carrying Handle	1
6	Nylon Base Holder	1	32	End Table Frame	1
7	Bolt M12x30	1	33	Nut M5	3
8	Nylon Base	1	34	Rubber Feet-1	2
9	Screw M6x12	5	35	Cross Bar	3
10	Cross Bolt M5x16	4	36	Working Table Base	2
11	Rotating Head	1	37	Cross Bolt M5x10	2
12	M5x10	1	38	Washer $\Phi 5$	2
13	Side Frame B	1	39	Rubber Feet-2	2
14	Rotating Shaft A	1	40	Guide Rod	2
15	Spring Pin	1	41	Spring	2
16	Spring $\Phi 8 \times \Phi 0.8 \times 18$	1	42	Blade Base	1
17	Bolt 12x8	1	43	Rotating Shaft B	1
18	Handle Base	1	44	Blade	1
19	Lock Pin	1	45	Frame Base	1
20	Handle-1	1	46	Cross Bolt M6x16	2
21	Handle-2	1	47	Nut	1
22	PVC Handle	1	48	Pin	1
23	Hook A	1	49	Cutting Guide	1
24	Chain	1	50	Allan Wrench M5	1
25	Cross Bolt M5x25	6	51	Allan Wrench M6	1
26	Cross Screw M5x12	3	52	Allan Wrench M8	1